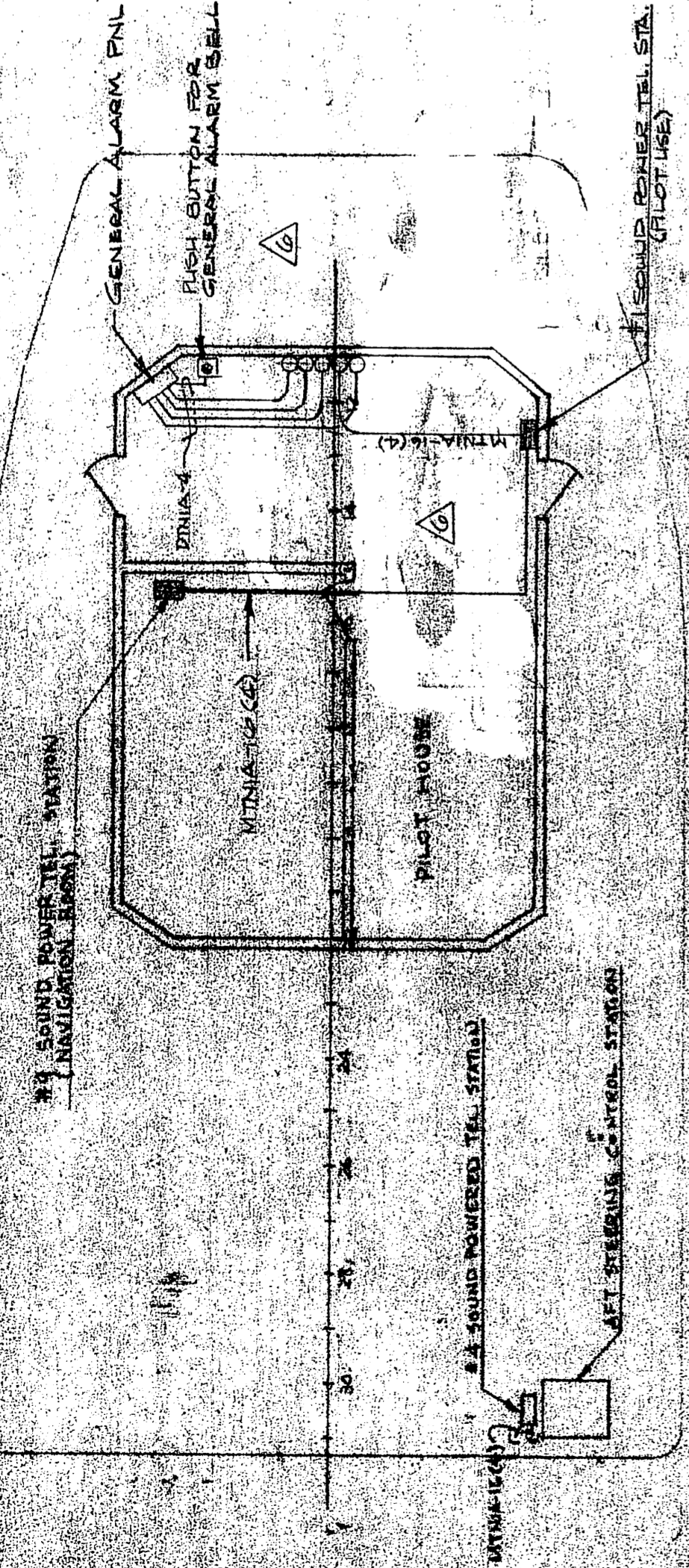
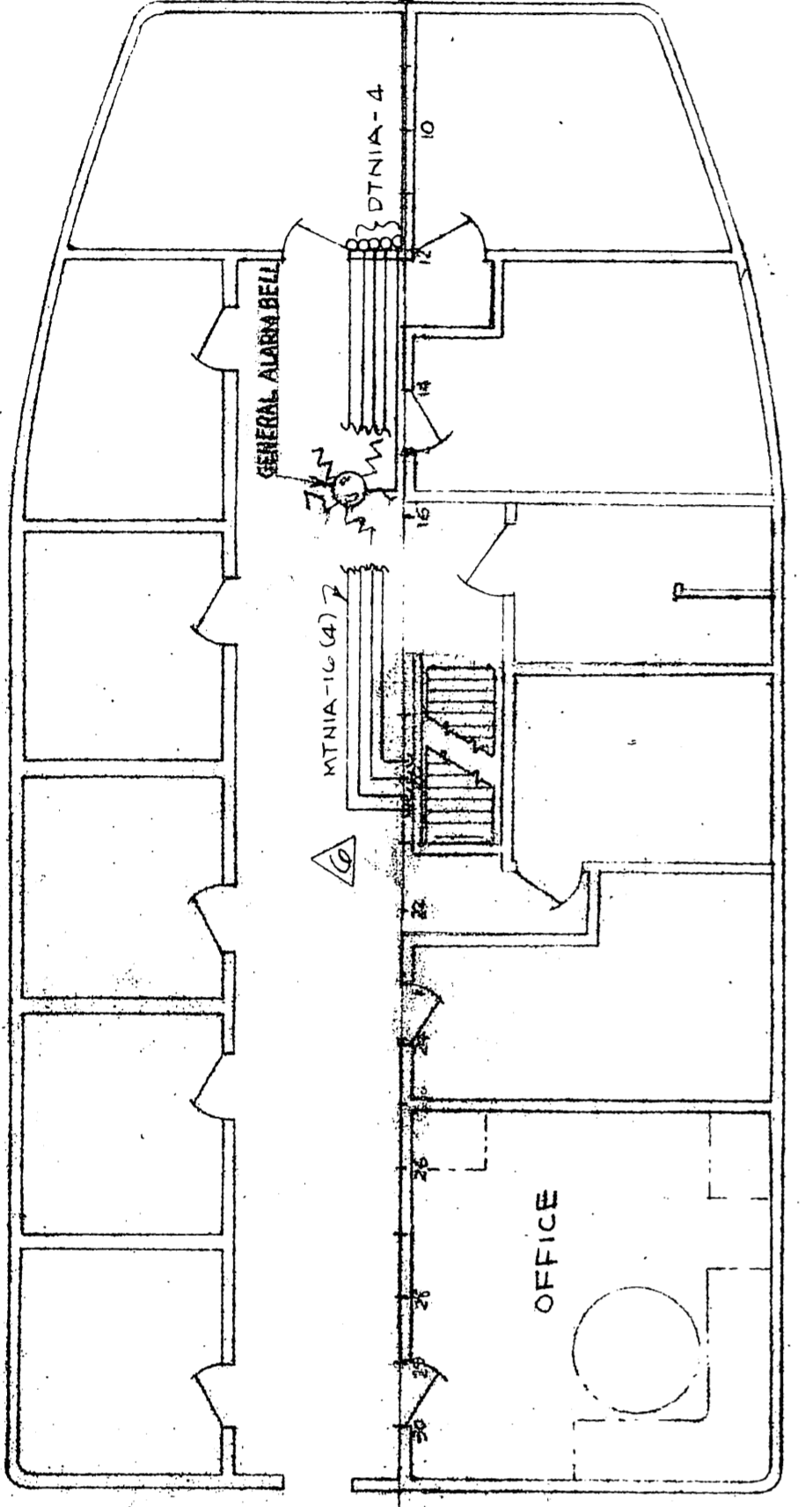


REV. NO.	DATE	BY	DESCRIPTION
1	SEP 16 1961	TRK	ADDED TERMINAL BOX TO OFFICE. CHANGED PLANTING NUMBERS FOR DECK HOUSES.
2	SEP 16 1961	TAK	DELETED NO. 7 STATION FROM ENGINE ROOM. DELETED ALL (66) TERMINAL BOXES.
3	OCT 17 1961	TRK	ADDED GENERAL ALARM BELL IN ENGINE ROOM, VAPOR CRACK ROOM, AND CONVERTOR ROOM.
4	NOV 14 1961	TRK	ADDED CABLE NEAR EACH STACK, VAPOR CRACK ROOM, AND CONVERTOR ROOM.
5	NOV 14 1961	TRK	REVISED DWG. FOR AS BUILT INSTALLATIONS.

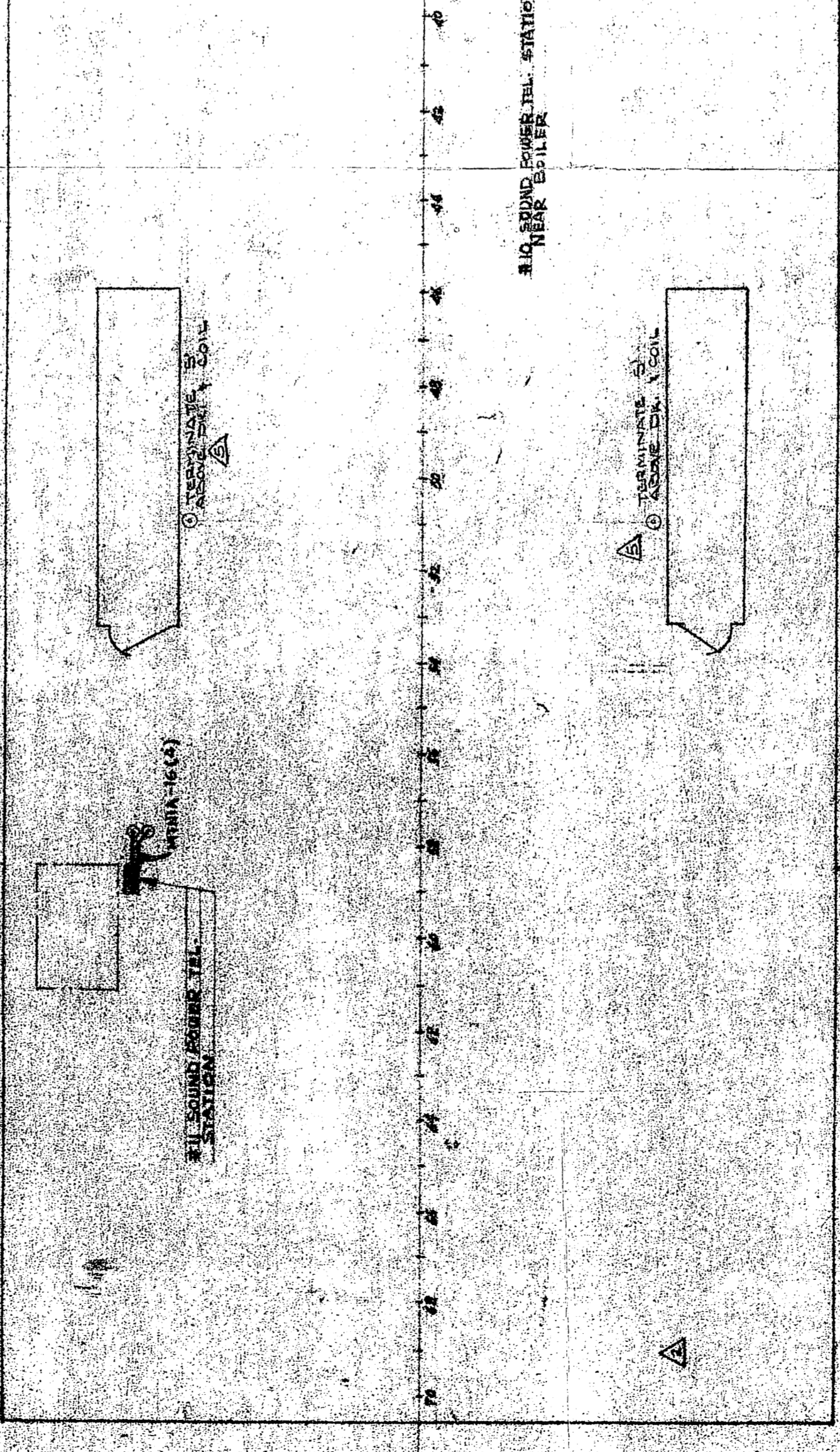
PHONE NUMBER	LOCATION
#1 STATION	PILOT HOUSE
#2 STATION	GALLEY
#3 STATION	ENGINE ROOM
#4 STATION	ENGINE ROOM
#5 STATION	ENGINEERS ROOM
#6 STATION	CAPTAIN'S ROOM
#7 STATION	INSTRUMENT COMPARTMENT
#8 STATION	INSTRUMENT ROOM
#9 STATION	VENTILATION ROOM
#10 STATION	NEAR BOILER
#11 STATION	NEAR MAIN DECK



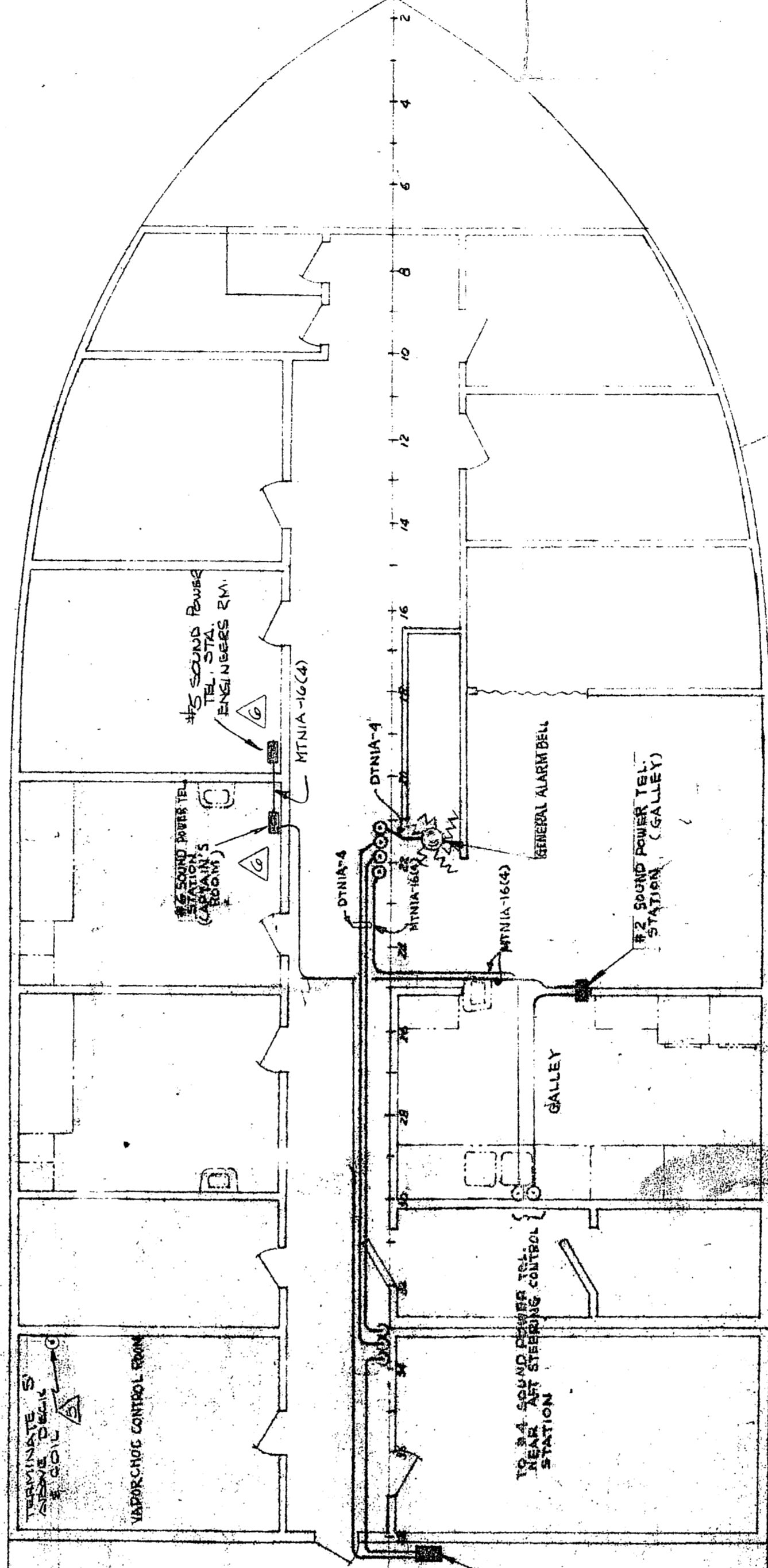
WIRING IN PILOT HOUSE
SCALE: 3/16" = 1'-0"



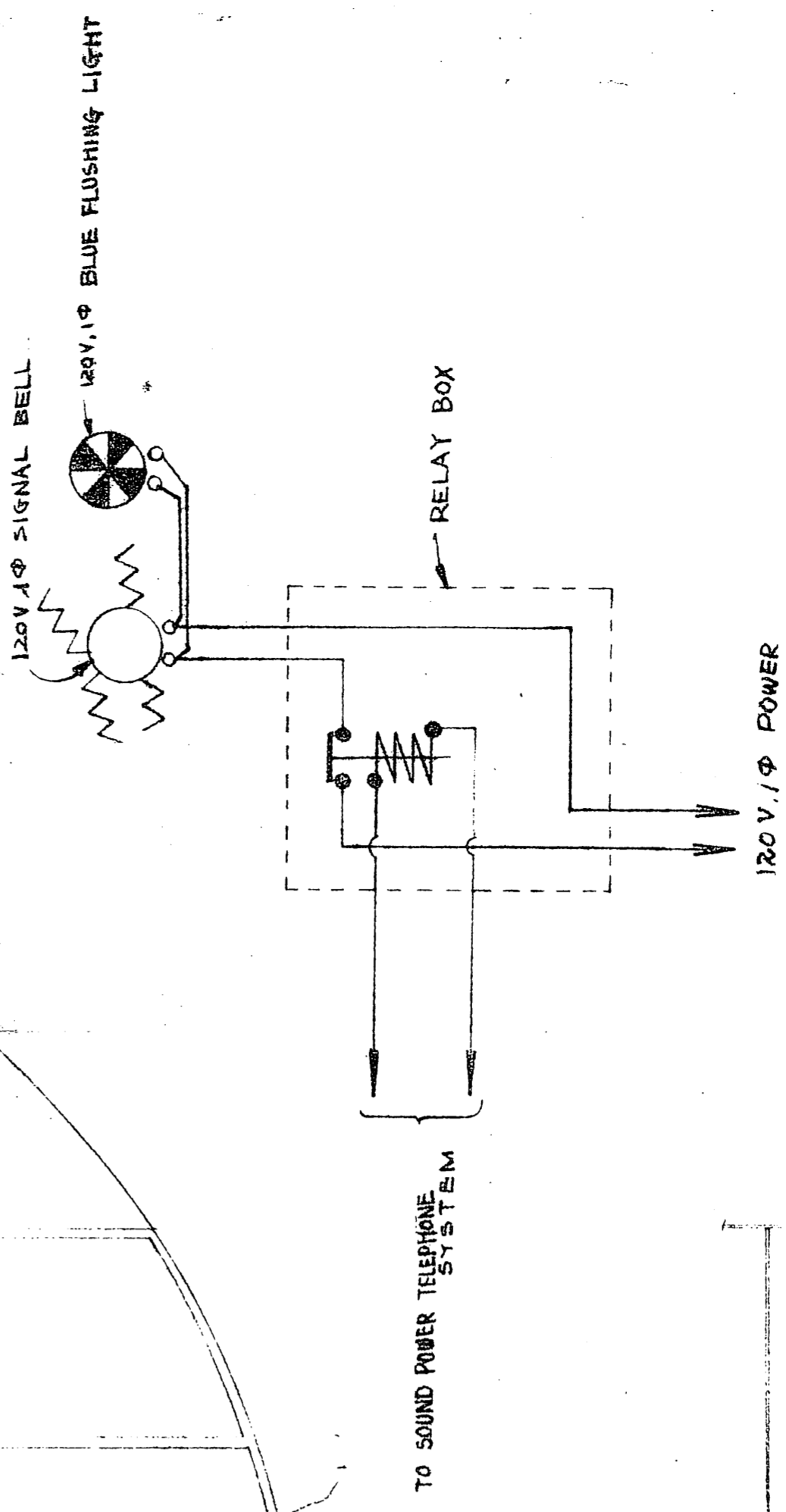
WIRING ON FOC'SLE DECK
SCALE: 3/16" = 1'-0"



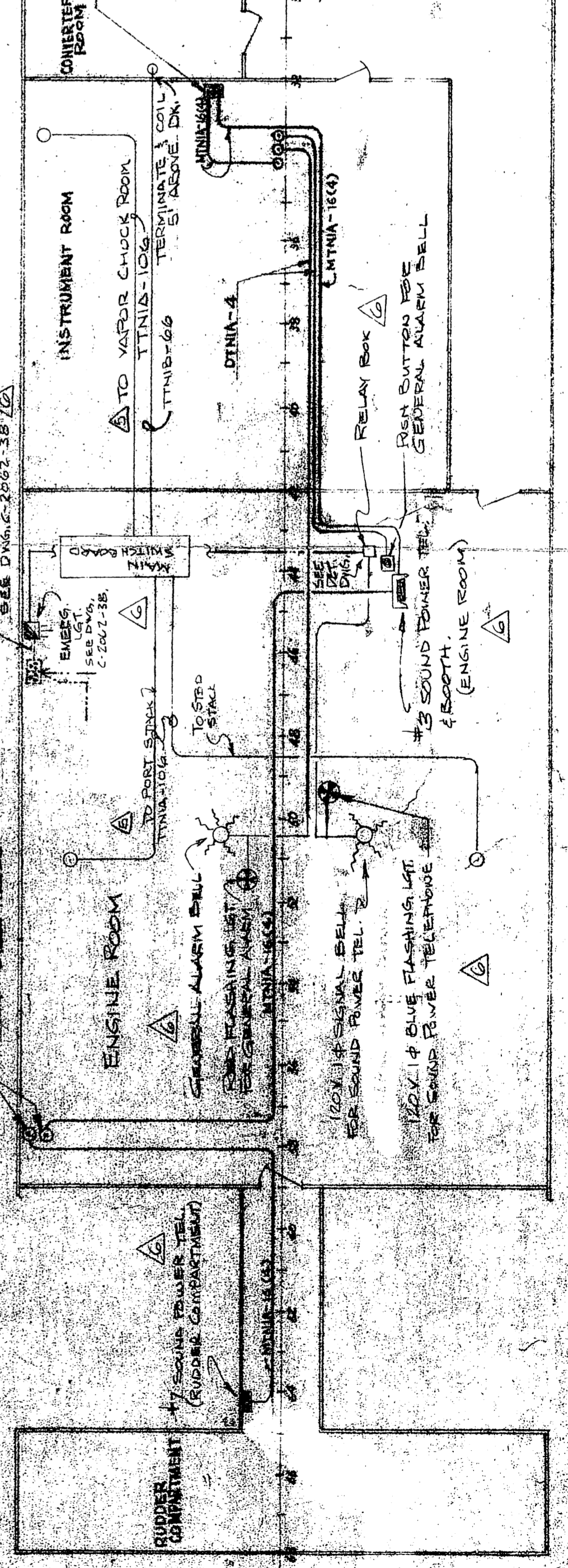
WIRING ON MAIN DECK
SCALE: 3/16" = 1'-0"



DETAIL CONNECTION FOR RELAY BOX IN ENGINE ROOM



NOTE: (1) ALL GENERAL ALARM BELLS AND RED FLASHING LIGHTS SHALL BE OF THE U.S.C.G. APPROVED TYPE.



WIRING IN MACHINERY SPACE
SCALE: 3/16" = 1'-0"

DESIGN ASSOCIATES, INC.
NAVAL ARCHITECTS
NEW ORLEANS, LA.

TIDE WATER MARINE SERVICE

143' x 36' x 10' SEISMIC VESSEL

WIRING ARRANGEMENT FOR GENERAL ALARM, SOUND POWER TEL.

Drawn: TAK Date: AUG. 24 '61
Traced: Date: Date:
Approved: Date: Date:
Sheet: 01 Drawing No. C-2062-52